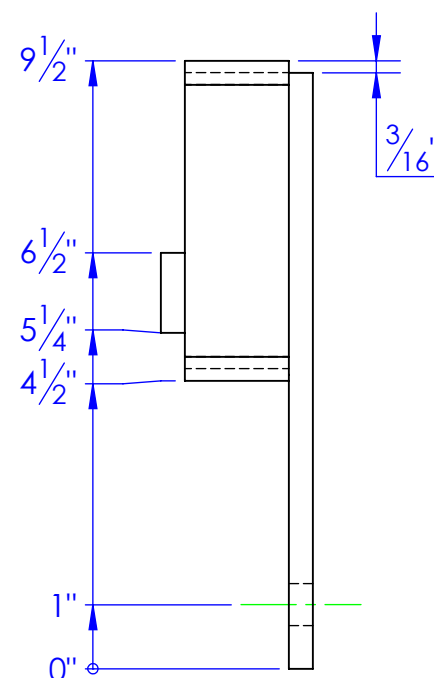
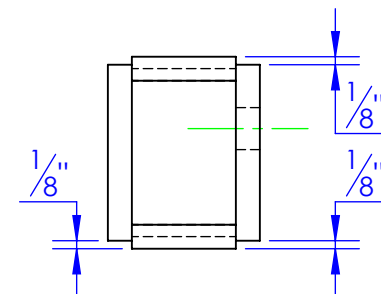
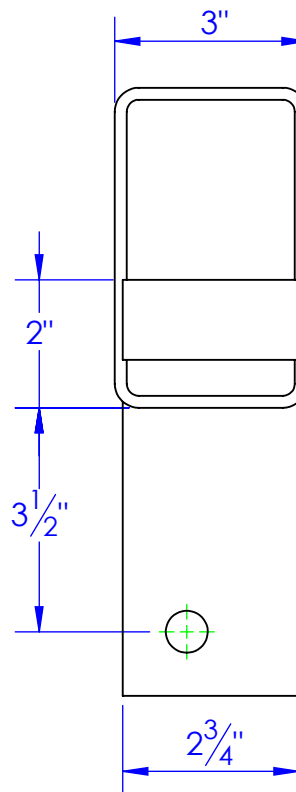
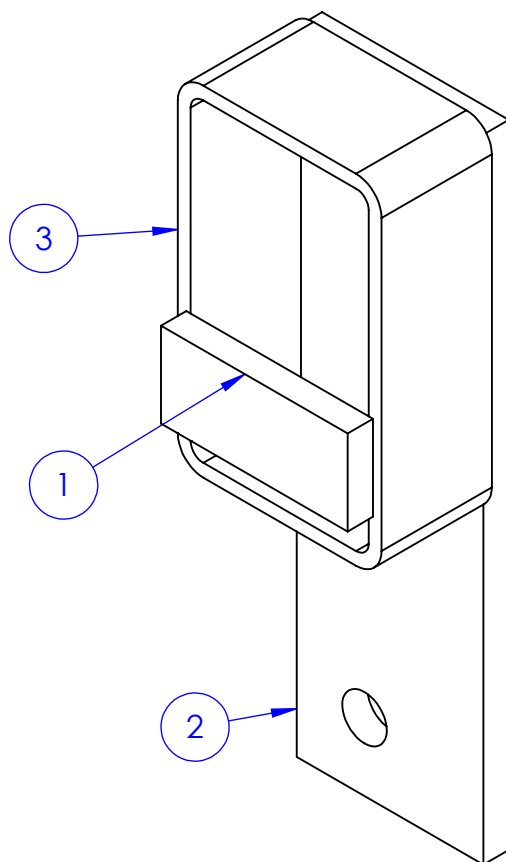


ITEM NO.	PART NUMBER	DESCRIPTION	MATERIAL	DRAWING #	QTY.
1	FI .375 X 1.25 L 2.75	LENGTH: 2-3/4"	FI 3/8x1-1/4"	STOCK	1
2	FP-LL STRAP 9.3125	LEVEL LOK MOUNTING STRAP 9-5/16"	ST-FI 3/8x2-3/4"	90-2823	1
3	RT 5x3x.1875 L 1.625	LENGTH: 1-5/8"	ST-RT 5x3x3/16	STOCK	1

	REVISIONS		
REV.	DESCRIPTION	DATE	APPROVED
A	REV. TO NEW STANDARD DRAWING FROM 10-1816	1/21/2013	



**PROPRIETARY AND CONFIDENTIAL**  
THE INFORMATION CONTAINED IN THIS DRAWING IS THE SOLE PROPERTY OF TRIPLE C INC. ANY REPRODUCTION IN PART OR AS A WHOLE WITHOUT THE WRITTEN PERMISSION OF TRIPLE C INC. IS PROHIBITED.

DIMENSIONS ARE IN INCHES TOLERANCES: FRACTIONAL $\pm 1/16$ ANGULAR: MACH $\pm 1$ BEND $\pm$ TWO PLACE DECIMAL $\pm 010$ THREE PLACE DECIMAL $\pm 005$	
MATERIAL	---
DO NOT SCALE DRAWING	

NAME	DATE
DRAWN HEATH	1/21/2013
PART # FP-CLL2- REAR DS	
ASM #	
COMMENTS: CLL-2 LEVEL LOK REAR DRIVER SIDE	

P.O. BOX 248, SABETHA, KS 66534	
<b>TRIPLE C</b> INC.	
SIZE A	DWG. NO. 90-1802-28
SCALE:1:3	WEIGHT: 4.33
SHEET 1 OF 1	REV. A